

9011 ERIE™




Wall-Mount, Rear Outlet, Elongated Front, Flush Valve Toilet, 1.1 to 1.6 gpf water consumption




FEATURES

- Perfect for clinical applications
- Water consumption ranges from 1.1 to 1.6 gallons per flush, depending on the flush valve used
- Elongated front bowl
- 1-1/2" top spud for flush valve installation that accommodates many brands of flush valves
- High performance, high efficiency (HET) when using the proper flushometer
- The Mansfield® Limited lifetime warranty
- Available in White only



MODEL	 ELONGATED
Toilet seat not included	

COMPONENTS




MODEL #	DESCRIPTION	CODES/STANDARDS
9011	Wall-mount, rear outlet, elongated front toilet bowl. Includes a 1-1/2" top spud for flush valve installation. Less carrier mounting system, wall bolts, caps, toilet seat and flush valve.	 HIGH EFFICIENCY TOILET  UPC  ADA COMPLIANT

9011 ERIE™



Wall-Mount, Rear Outlet, Elongated Front, Flush Valve Toilet, 1.1 to 1.6 gpf water consumption

SPECIFICATIONS

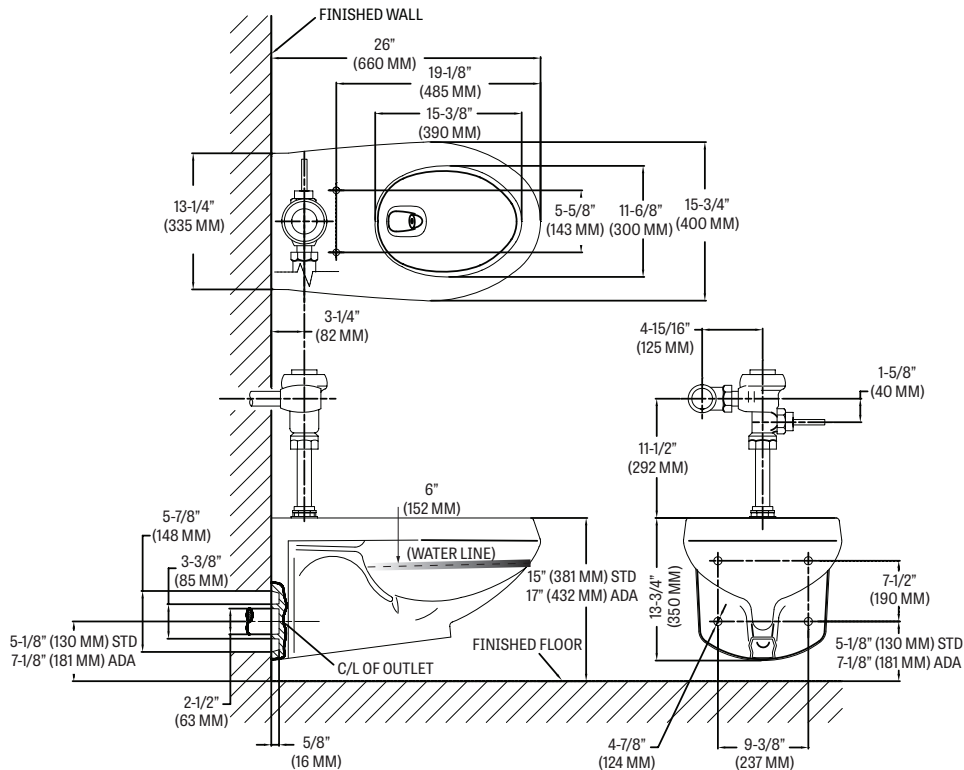
MODEL #	DESCRIPTION	CODES/STANDARDS
9011	Elongated front, (1.1 to 1.6 gallons per flush) wall mount bowl	  

MATERIAL	Vitreous China
WATER PRESSURE RANGE	20 to 80 PSI
FLUSH SYSTEM	Siphon jet technology
WATER USAGE	1.1 to 1.6 gallons per flush
WATER SURFACE AREA	8-1/2" X 10-1/2"
ROUGH-IN	Rear outlet
MAP RATING	1,000 grams

TRAP DIAMETER	1-7/8"
TRAP SEAL	2-1/8"
SHIPPING WEIGHT	Model 9011 - 54 lbs. (25 kg)
WARRANTY	Vitreous China - Limited Lifetime Tank Trim - Limited One Year

TECHNICAL INFORMATION

Note: these dimensions are nominal and subject to change without notice.



Fixture performance and specifications meet or exceed ASME A112.19.2-2013/CSA B45.1-13 standards, and other state and local codes.