



**CONFIDENTIAL**  
**PRODUCT TECHNICAL DATA SHEET**  
**BONELESS DUCK BREAST**

PRODUCT NAME: Boneless Duck Breast

INTENDED USE: Foodservice / Omnichannel

EXPORT COUNTRIES: N/A

MANUFACTURER'S PRODUCT CODE: 003581012

USDA ESTABLISHMENT NUMBER: P-2375

COUNTRY OF ORIGIN: USA

PRODUCT DESCRIPTION: All-Natural Boneless Duck Breast with skin on 9-11 oz., marinated with up to 5% of a solution of water & sea salt, 8 packs of 2 lobes packed in Maple Leaf Farms logo vacuum package, frozen.

PRODUCT CLAIMS: All Natural

INGREDIENTS: Duck Breast, water, sea salt.

ALLERGENS: Contains none of the following: egg, wheat, soy, milk, tree nuts, peanuts, shellfish, fish, or sesame.

NAMP CODE: N/A

COOKING INSTRUCTIONS: Cook to an internal temperature of 165°F measured by a meat thermometer.

FOOD SAFETY: Maple Leaf Farms produces wholesome products produced in facilities that are inspected by USDA, FSIS. As such, these facilities operate within HACCP plans compliant with 9CFR417 and follow FSIS guidelines for food security outlined in FSIS Directive 5420.1.

PACKAGING CONFIGURATION: 8 pack / 2 lobes

UNIT NET WEIGHT: 18 – 22 oz. / 0.51 – 0.62 kg.

UNIT NET WEIGHT WITH FILM: 18.32 – 22.32 oz. / 0.51 – 0.63 kg.

FILM WEIGHT: 0.32 oz. / 0.009 kg.

CASE WEIGHT: 9 - 11 lbs. / 4.08 – 4.98 kg.

CASE WEIGHT WITH FILM & PRODUCT: 9.74 – 11.74 lbs. / 4.41 – 5.32 kg.

FILM & BOX WEIGHT: 0.74 lbs. / 0.33 kg.

SHIPPING CONTAINER BARCODE: 9 00 73981 34900 3

PACKAGE UPC: N/A

DISTRIBUTOR'S ADDRESS: Maple Leaf Farms, Inc., 9179 North 200 East, Milford, IN 46542

PRODUCT HANDLING: Keep Frozen to less than 0°F.

SHELF LIFE: 2 years from pack date if handled as indicated above.

RETAIL STORE MERCHANDISING TYPE: Frozen Only

RAW PRODUCT DIMENSIONS: Varies with duck breast size

RETAIL PACKAGE DIMENSION: N/A

MASTER CASE (O.D.) (inches): 19.5625 x 6.3125 x 4.625

MASTER CASE (I.D.) (inches): 19.25 x 6.0 x 4.0

MASTER CASE CUBE (O.D.): 0.331 cubic feet

MASTER CASE CUBE (I.D.): 0.267 cubic feet

PALLETIZATION: Tie: 14 Tier: 10 Total cases per pallet: 140

CODE DATING: Each vacuum pouch shall be marked with a 4-digit Julian date & the plant number,  
**Format: YJJJ2375** (Y= single digit year; JJJ = day of the year; 2375 represents plant no.)

**Example:** For product produced on April 29, 2021 at P-2375, **11192375**.

**Code date format when sticker gun stickers are used: 2375**  
**YJJJ**

**Example:** For product produced on April 29, 2021 at P-2375: **2375**  
**1119**

Each shipping container label shall be marked with a BEST IF USED BY DATE using MMM-DD-YYYY format. An open pack date is also found on the shipping container label in the format MM-DD-YY.

CASE LABEL:

003581012    **KEEP FROZEN**

**BONELESS DUCK BREAST**

MARINATED WITH UP TO 5% OF A SOLUTION OF WATER AND SEA SALT.

NET WEIGHTS TO BE MARKED ON CONSUMER PACKAGES PRIOR TO DISPLAY AND SALE. TARE WEIGHT OF CONSUMER PACKAGE 0.02 LBS.

PACK DATE: 12/11/24    BEST IF USED BY: 12/11/26

8/2 pack / 9-11 oz.

Net Weight

9.36 lb 4.25 kg

434605500017

(01)9007398 1349003(3202)000936(11)241211(21)434605500017

90014    Distributed by: MAPLE LEAF FARMS, INC., 9179 North 200 East, Milford, IN 46542    PRODUCT OF USA    311902





**SAFE HANDLING INSTRUCTIONS**

THIS PRODUCT WAS PREPARED FROM INSPECTED AND PASSED MEAT AND/OR POULTRY. SOME FOOD PRODUCTS MAY CONTAIN BACTERIA THAT COULD CAUSE ILLNESS IF THE PRODUCT IS MISHANDLED OR COOKED IMPROPERLY. FOR YOUR PROTECTION, FOLLOW THESE SAFE HANDLING INSTRUCTIONS.

 KEEP REFRIGERATED OR FROZEN THAW IN REFRIGERATOR.

 KEEP RAW MEAT AND POULTRY SEPARATE FROM OTHER FOODS. WASH WORKING SURFACES (INCLUDING CUTTING BOARDS, UTENSILS, AND HANDS) AFTER TOUCHING RAW MEAT OR POULTRY.

 COOK THOROUGHLY.

 KEEP HOT FOODS HOT. REFRIGERATE LEFTOVERS IMMEDIATELY OR DISCARD.

COOK TO AN INTERNAL TEMPERATURE OF 165°F MEASURED BY A MEAT THERMOMETER

434605500017

(01)9007398 1349003(3202)000936(11)241211(21)434605500017

**Nutrition Facts**

varied servings per container

**Serving size 4 oz raw (112g)**

Amount per serving

**Calories**

170

% Daily Value\*

**Total Fat** 12g

16%

Saturated Fat 3g

16%

Trans Fat 0g

**Cholesterol** 105mg

36%

**Sodium** 250mg

11%

**Total Carbohydrate** <1g

0%

Dietary Fiber 0g

0%

Total Sugars 0g

Includes 0g Added Sugars

0%

**Protein** 16g

Vitamin D 5.3mcg

25%

Calcium 10mg

0%

Iron 2.5mg

15%

Potassium 270mg

6%

Phosphorus 200mg

15%

\* The % Daily Value (DV) tells you how much a nutrient in a serving of food contributes to a daily diet. 2,000 calories a day is used for general nutrition advice.

NUTRITION INFORMATION:

Nutrition Facts	
varied servings per container	
Serving size 4 oz raw (112g)	
Amount per serving	
Calories	170
% Daily Value*	
<b>Total Fat</b> 12g	<b>16%</b>
Saturated Fat 3g	16%
Trans Fat 0g	
<b>Cholesterol</b> 105mg	<b>36%</b>
<b>Sodium</b> 250mg	<b>11%</b>
<b>Total Carbohydrate</b> <1g	<b>0%</b>
Dietary Fiber 0g	0%
Total Sugars 0g	
Includes 0g Added Sugars	0%
<b>Protein</b> 16g	
Vitamin D 5.3mcg	25%
Calcium 10mg	0%
Iron 2.5mg	15%
Potassium 270mg	6%
Phosphorus 200mg	15%
* The % Daily Value (DV) tells you how much a nutrient in a serving of food contributes to a daily diet. 2,000 calories a day is used for general nutrition advice.	

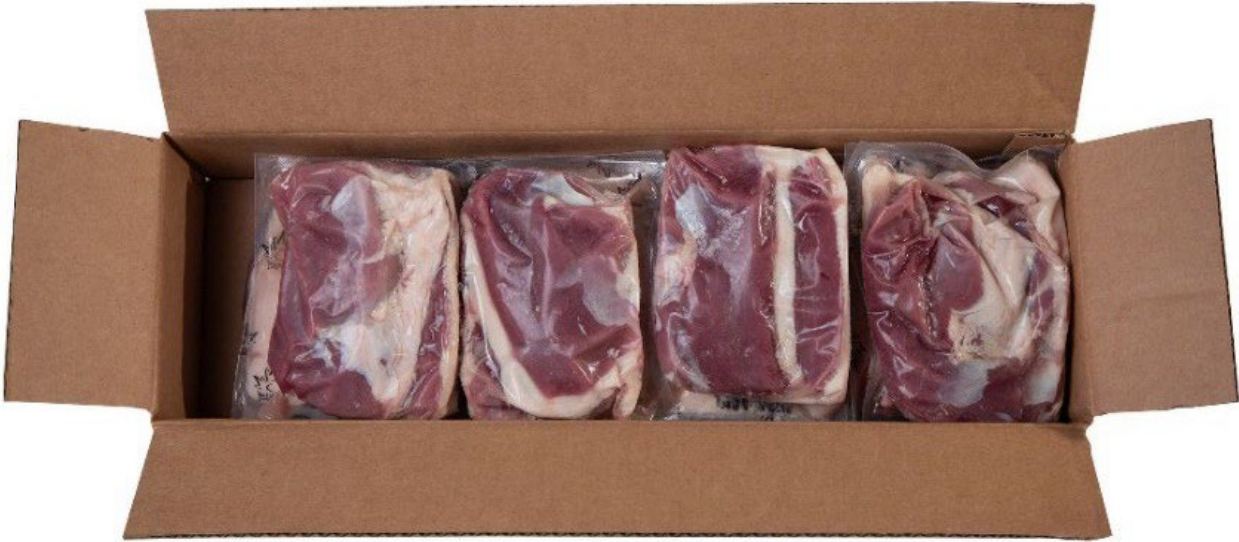
PORTION SIZE RANGE: Low End (Left) to High End (Right)  
Raw:

Cooked:

Maple Leaf Farms, Inc., 9179 North 200 East, Milford, IN

3 | Page

CASE VIEW:



FRONT PRODUCT VIEW:

**BONELESS DUCK BREAST**

SEASONED WITH UP TO 5% OF A SOLUTION OF WATER AND SEA SALT

**Keep Frozen**

Cook to internal temperature of 165°F measured with a meat thermometer.

\*No artificial ingredients, minimally processed.

Nutrition Facts		Amount/serving	% Daily Value*	Amount/serving	% Daily Value*
Varied servings		Total Fat 12g	16%	Total Carb <1g	0%
Serv size 4oz raw (112g)		Saturated Fat 3g	16%	Dietary Fiber 0g	0%
Calories 170		Trans Fat 0g		Total Sugars 0g	
per serving		Cholesterol 105mg	36%	Includes 0g Added Sugars 0%	
		Sodium 250mg	11%	Protein 16g	
		Vitamin D 25% • Calcium 0% • Iron 15% • Potassium 0% • Phosphorus 15%			

\*The % Daily Value tells you how much a nutrient in a serving of food contributes to a daily diet. 2,000 calories a day is used for general nutrition advice.

INGREDIENTS: BONELESS DUCK BREAST, WATER, SEA SALT

MAPLE LEAF FARMS INC. | 9179 NORTH 200 EAST, MILFORD, IN 46542-0308 U.S.A. | 1-800-348-0282

**SAFE HANDLING INSTRUCTIONS** THIS PRODUCT WAS PREPARED FROM INSPECTED AND PASSED MEAT AND/OR POULTRY. SOME FOOD PRODUCTS MAY CONTAIN BACTERIA THAT COULD CAUSE ILLNESS IF THE PRODUCT IS MISHANDLED OR COOKED IMPROPERLY. FOR YOUR PROTECTION, FOLLOW THESE SAFE HANDLING INSTRUCTIONS.

KEEP REFRIGERATED OR FROZEN. IF THAW IN REFRIGERATOR.

KEEP RAW MEAT AND POULTRY SEPARATE FROM OTHER FOODS. WASH HANDS, SURFACES AND DISHES CUTTING BOARDS, UTENSILS, AND HANDS AFTER TOUCHING RAW MEAT OR POULTRY.

COOK THOROUGHLY.

KEEP HOT FOODS HOT. REFRIGERATE LEFTOVERS IMMEDIATELY OR DISCARD.

© 2024 312144

The information contained within this product technical data sheet is for information purposes only and is believed to be accurate at the time of issue. No warranty, expressed or implied, is made regarding the accuracy, adequacy, completeness, legality, reliability, or usefulness of this information. Disclosing, copying, distributing or taking any action in reliance on the contents of this information is strictly prohibited without prior written consent by an authorized agent of Maple Leaf Farms.