

1301 ERIE™



Wall-Mount, Rear Outlet, Elongated Front, *1.28 or 1.6 Toilet Bowl

FEATURES

- Perfect for clinical applications
- *1.28 or 1.6 gpf / 4.86 or 6.05 lpf low water consumption
(*when using the proper 1.28 flushometer)
- Elongated front bowl
- 1-1/2" top spud for flush valve installation that accommodates many brands of flush valves
- High performance, high efficiency (HET)
- The Mansfield® Limited lifetime warranty
- Available in White only






MODEL 1301

Toilet seat not included



ELONGATED

COMPONENTS




MODEL #	DESCRIPTION	CODES/STANDARDS
1301	Wall-mount, rear outlet, elongated front toilet bowl. Includes a 1-1/2" top spud for flush valve installation. Less carrier mounting system, wall bolts, caps, toilet seat and flush valve.	   <p>HIGH EFFICIENCY TOILET C ADA COMPLIANT</p>

1301 ERIE™



Wall-Mount, Rear Outlet, Elongated Front, *1.28 or 1.6 Toilet Bowl

SPECIFICATIONS

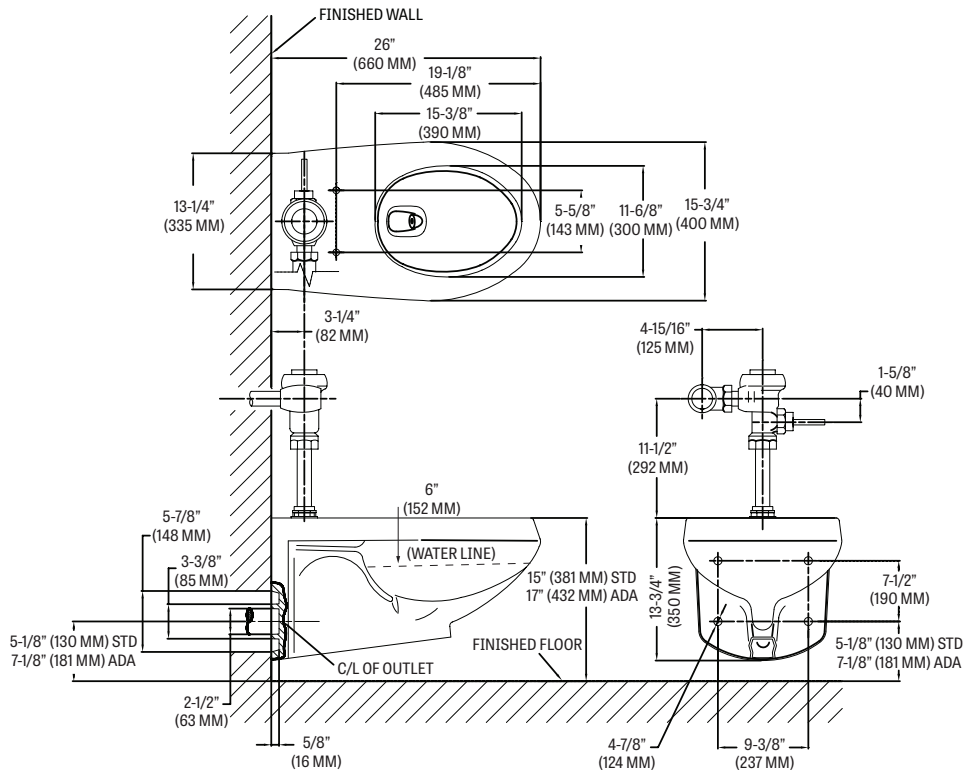
MODEL #	DESCRIPTION	CODES/STANDARDS
1301	Elongated front, (*1.28 or 1.6 gpf / 4.86 or 6.05 lpf) wall mount bowl	  

MATERIAL	Vitreous China
WATER PRESSURE RANGE	20 to 80 PSI
FLUSH SYSTEM	Siphon jet technology
WATER USAGE	1.28 or 1.6 gpf / 4.86 or 6.05 lpf
WATER SURFACE AREA	8-1/2' X 10-1/2'
ROUGH-IN	Rear outlet
MAP RATING	1,000 grams

TRAP DIAMETER	1-7/8"
TRAP SEAL	2-1/8"
SHIPPING WEIGHT	Model 1301 - 54 lbs. (25 kg)
WARRANTY	Vitreous China - Limited Lifetime Tank Trim - Limited One Year

TECHNICAL INFORMATION

Note: these dimensions are nominal and subject to change without notice.



Fixture performance and specifications meet or exceed ASME A112.19.2-2013/CSA B45.1-13 standards, and other state and local codes.