

268
BARRETT



Vitreous China, ADA*, Self-Rimming Lavatory

FEATURES



- 23-1/16" x 18-5/8" self-rimming lavatory
- 16-1/4" x 10-1/2" basin
- Complies with ADA requirements for accessibility
- Concealed front overflow
- Available in single hole, 4" or 8" faucet centers
- The Mansfield® Limited Lifetime Warranty
- Available in White

*This product is designed to meet ADA requirements when properly installed in accordance with ADA guidelines.



MODEL 268-4

COMPONENTS



MODEL #	DESCRIPTION	CODES/STANDARDS
268-1 (268100000)	Self-rimming lavatory with single hole faucet center. Does not include faucet, drain assembly and supply.	 C  ADA COMPLIANT
268-4 (268410000)	Same as above with 4" faucet centers. Specify color.	
268-8 (268810000)	Same as above with 8" faucet centers. Specify color.	

268 BARRETT

MANSFIELD®

Vitreous China, ADA*, Self-Rimming Lavatory

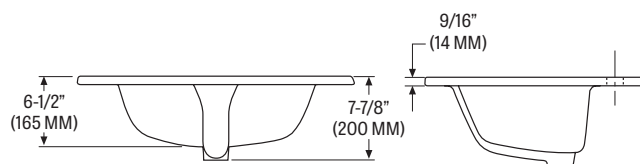
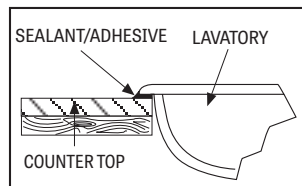
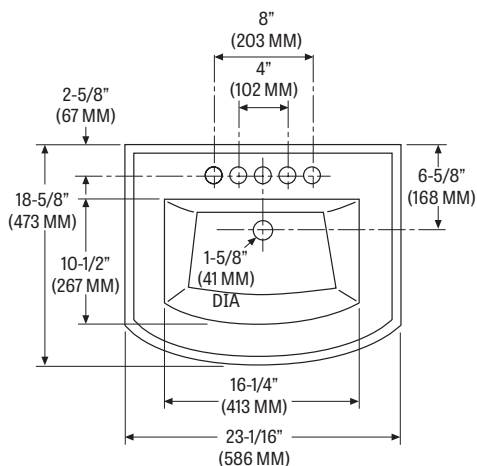
SPECIFICATIONS

MODEL #	DESCRIPTION	CODES/STANDARDS
268-1	Self-rimming lavatory with single hole faucet center	 
268-4	Same as above with 4" faucet centers	
268-8	Same as above with 8" faucet centers	

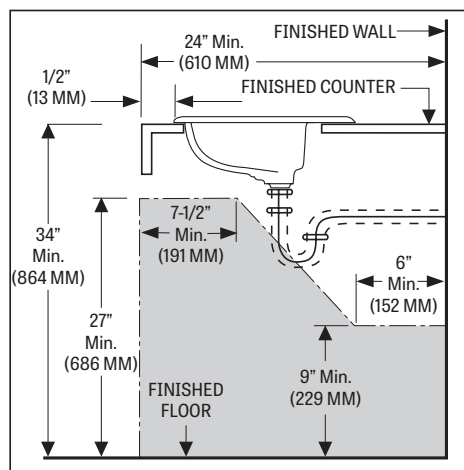
MATERIAL	Vitreous China	SHIPPING WEIGHT	29 lbs. (13 kg)
WARRANTY	Vitreous China - Limited Lifetime	FAUCET HOLES	Single hole, 4" or 8"

TECHNICAL INFORMATION

Note: these dimensions are nominal and subject to change without notice.



MODEL 268 ADA INSTALLATION



Fixture performance and specifications meet or exceed ASME A112.19.2-2013/CSA B45.1-13 standards, and other state and local codes.