

ITEM NO. 3781164 / MODEL NO. 5343550000

AVA™ 3260**MANSFIELD®**

60" x 32" x 25-1/4", Acrylic, Swirl-Way® Air Massage Bath

FEATURES

- High gloss, easy-to-clean acrylic with fiberglass reinforcement
- Air massage hydromassage system uses discreet air injectors to create huge air bubbles that revitalize the body with a gentle massage, leaving bathers deeply relaxed
- Oval model with end drain (left- or right-hand installation)
- Pre-leveled legs for easy installation
- Spacious bathing well designed for one-person comfort
- 10-year limited warranty on acrylic
- Installation: Drop-In
- Available in White

**COMPONENTS**

MODEL #	DESCRIPTION	CODES/STANDARDS
5343550000	60" x 32" x 25-1/4" Oval Swirl-Way® Air Massage Bath. Drain not included.	
ACCESSORIES		
LDFK-	Linear DFK Overflow Drain (White — 1330, Chrome — 1335, Everbrass — 1336, Brushed Nickel — 1337, Oil Rubbed Bronze — 1338, Matte Black — 1339)	



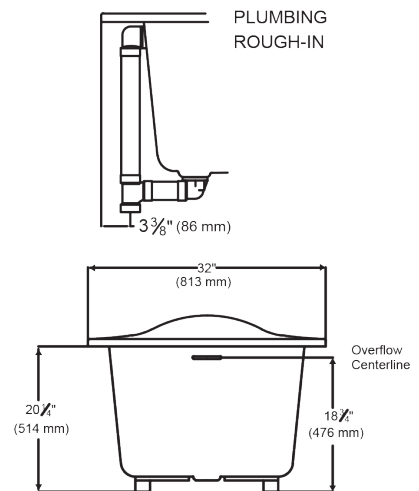
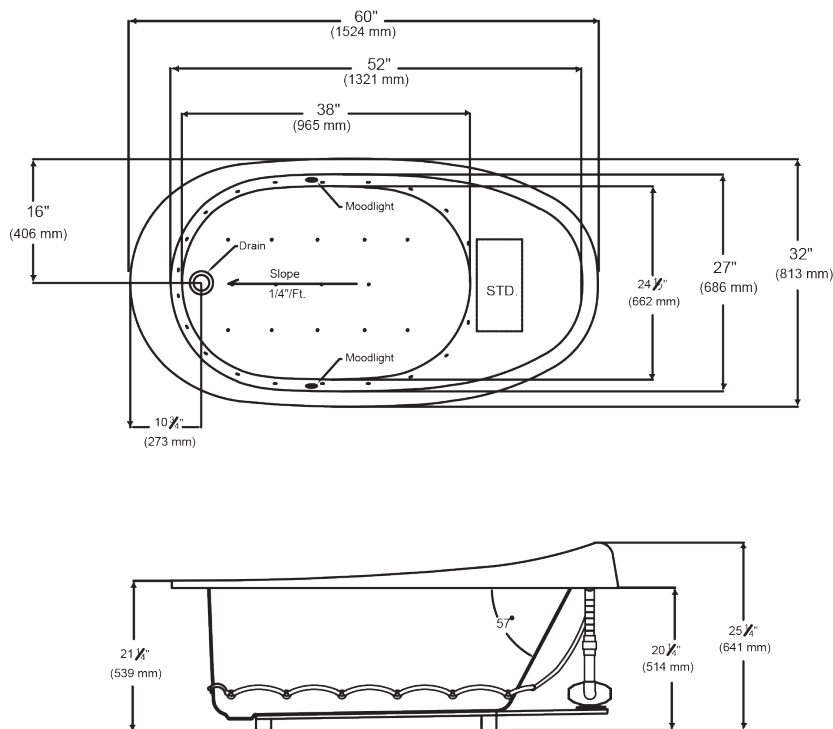
ITEM NO. 3781164 / MODEL NO. 5343550000

AVA™ 3260**MANSFIELD®**

60" x 32" x 25-1/4", Acrylic, Swirl-Way® Air Massage Bath

SPECIFICATIONS

MATERIAL	Acrylic, fiberglass reinforced	SOAKING DEPTH	14-1/4"
CONSTRUCTION	Self contained, pre-plumbed air bath system mounted on pre-leveled base.	NUMBER OF JETS	32
ELECTRICAL REQUIREMENTS	One 120 volt, 20 amp GFCI protected circuit.	WATER CAPACITY	40 gal. (min.) / 52 gal. (max)
		FLOOR LOADING WEIGHT	47 lbs. sq.ft.
		SHIPPING WEIGHT	Model 5343550000 - 150 lbs. (68 kg)
		BLOWER MOTOR	120 volt, 9 amp
		WARRANTY	Acrylic - 10-Year

TECHNICAL INFORMATION**Note:** these dimensions are nominal and subject to change without notice.**NOTES:**

- 1) Blower location shown for clarity.
STD. - Standard location only..
- 2) Required blower motor access is 20" W x 15" High
- 3) Measurements may vary 1/4" (+/-)
- 4) Nail Flange not available for this unit.
- 5) Removable apron is not available for this unit.
- 6) These dimensions are nominal and subject to change without notice.

