

ITEM NO. 3803787 / MODEL NO. 5302550000




**BAYWOOD™ 5.0****MANSFIELD®**

60" x 36" x 19-3/4", Acrylic, Swirl-Way® Air Massage Bath

**FEATURES**

- High gloss, easy-to-clean acrylic with fiberglass reinforcement
- Air massage hydromassage system uses discreet air injectors to create huge air bubbles that revitalize the body with a gentle massage, leaving bathers deeply relaxed
- Includes one pillow
- Rectangular model with end drain (left- or right-hand installation)
- Pre-leveled legs for easy installation
- Integrated dual armrests for bather's comfort
- Two decorative handles
- Spacious bathing well designed for one-person comfort
- 10-year limited warranty on acrylic
- Installation: Drop-In or Alcove
- Available in White

**COMPONENTS**

MODEL #	DESCRIPTION	CODES/STANDARDS
5302550000	60" x 36" x 19-3/4" Rectangular Swirl-Way® Air Massage Bath. Drain not included.	  
ACCESSORIES		
<b>CAB-</b>	Cable Overflow Drain (White — 1330, Chrome — 1335, Everbrass — 1336, Brushed Nickel — 1337, Oil Rubbed Bronze — 1338, Matte Black — 1339)	
<b>TIP-</b>	Tip Toe Overflow Drain (Chrome — 1335, Everbrass — 1336, Brushed Nickel — 1337, Oil Rubbed Bronze — 1338, Matte Black — 1339)	
<b>SWAPOO</b>	Nailing Flange Kit (includes 14' PVC nailing flange, tacky tape and installation instructions)	



ITEM NO. 3803787 / MODEL NO. 5302550000

**MANSFIELD®**



# BAYWOOD™ 5.0

60" x 36" x 19-3/4", Acrylic, Swirl-Way® Air Massage Bath

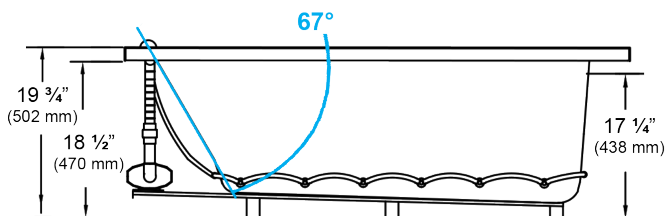
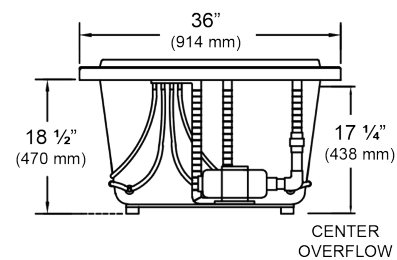
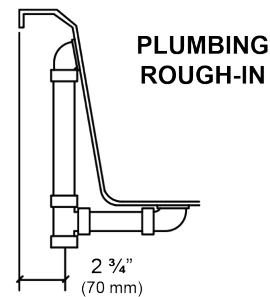
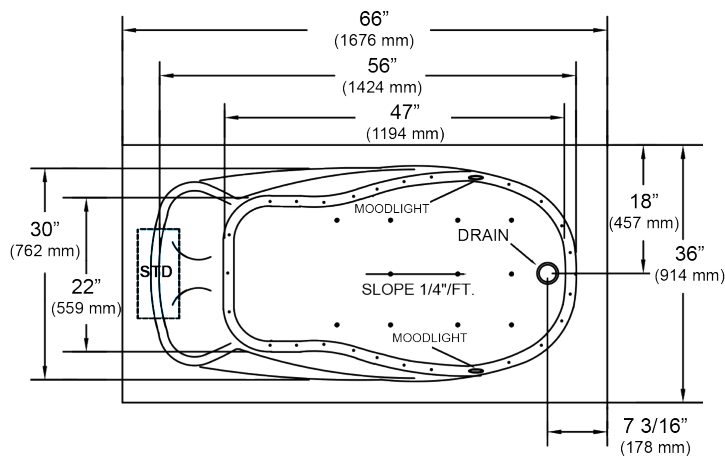
## SPECIFICATIONS

<b>MATERIAL</b>	Acrylic, fiberglass reinforced
<b>CONSTRUCTION</b>	Self contained, pre-plumbed air bath system mounted on pre-leveled base.
<b>ELECTRICAL REQUIREMENTS</b>	One 120 volt, 20 amp GFCI protected circuit.
<b>NUMBER OF JETS</b>	29

<b>SOAKING DEPTH</b>	14-1/2'
<b>WATER CAPACITY</b>	40 gal. (min.) / 60 gal. (max)
<b>FLOOR LOADING WEIGHT</b>	47 lbs. sq.ft.
<b>SHIPPING WEIGHT</b>	Model 5302550000 - 140 lbs. (64 kg)
<b>BLOWER MOTOR</b>	120 volt, 9 amp
<b>WARRANTY</b>	Acrylic - 10-Year

## TECHNICAL INFORMATION

**Note:** these dimensions are nominal and subject to change without notice.



**NOTES:**

1. Blower location is shown for clarity.
2. Required blower motor access is 20" W x 15" H.
3. Measurements may vary 1/4" (+/-)
4. If a factory installed nailing flange is added to a unit, add 1/8" to each side flanged.
5. Removable apron is optional for this unit.
6. These dimensions are nominal and subject to change without notice.

