

384-387
SUMMIT® 1.28



Elongated Front ADA*, SmartHeight, Vitreous China, Two-Piece Toilet

FEATURES

- High performance MagnaFlush™ flushing technology
- 1.28 gpf / 4.8 lpf high efficiency water consumption
- Elongated front, SmartHeight™ bowl (ADA compliant)
- SmartFaster™ 3-bolt tank-to-bowl connection
- 3" Rigid Flapper flush valve – requires less force to flush, is more consistent and uses a simple universal repair part/seal
- Fluidmaster® pilot operated anti-siphon fill valve
- 12" rough-in
- Model 57 chrome-plated, metal trip lever
- 2" glazed trapway
- The Mansfield® limited lifetime warranty on china; Five-year limited warranty on tank trim
- Available in White, Biscuit and Bone

*Meets ADA height requirement when installed with a regular toilet seat



MODEL 384-387

Toilet seat not included





Available as CTK


ELONGATED


SMARTHEIGHT ADA


CTK

COMPONENTS





MODEL #	DESCRIPTION	CODES/STANDARDS
384-387 (384010000-387010000)	Elongated front, ADA*, SmartHeight two-piece toilet.	 C  ADA COMPLIANT  WATERSENSE EPA 1.28 GPF  HIGH EFFICIENCY TOILET
384 (384010000)	Elongated front, ADA*, SmartHeight toilet bowl only. Toilet seat not included. Specify color.	
387 (387010000)	Tank and cover only, with left hand, front-mount, chrome-plated, metal trip lever. Supply not included. Specify color.	
TANK TRIM & REPLACEMENT PARTS		
57	Trip lever - chrome-plated, metal trip lever, left hand	
2036-1212	Summit® 1.28 rigid flapper flush valve	
400A	Fluidmaster® anti-siphon pilot fill valve	
2206	Anti-siphon pilot fill valve (compatible replacement)	
630-0030	Replacement flush valve seal	
386-LID	Tank lid	

384-387 SUMMIT® 1.28



Elongated Front ADA*, SmartHeight, Vitreous China, Two-Piece Toilet

SPECIFICATIONS

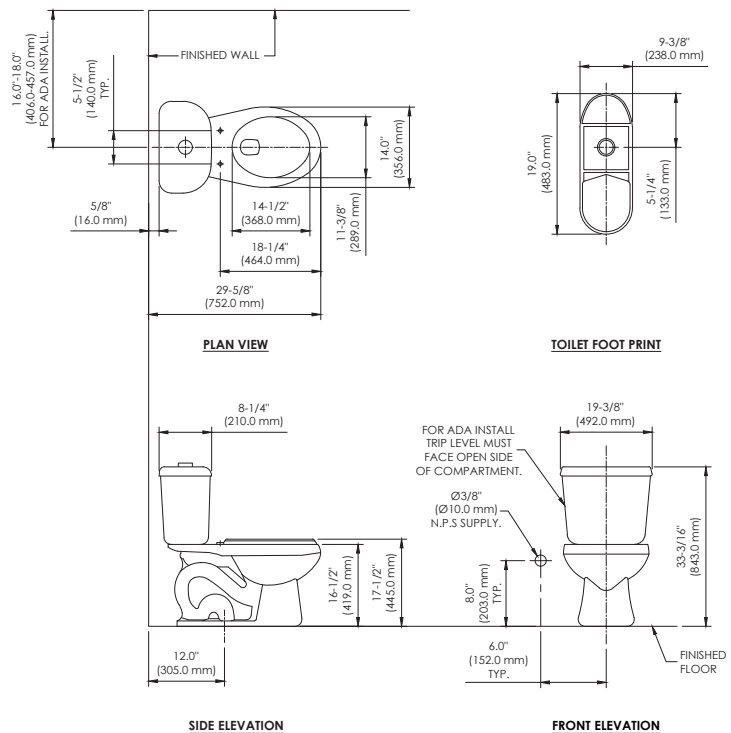
MODEL #	DESCRIPTION	CODES/STANDARDS
384-387	Elongated front, SmartHeight (1.28 gpf/4.8 lpf) two-piece toilet	   

MATERIAL	Vitreous China
WATER PRESSURE RANGE	20 to 80 PSI
FLUSH SYSTEM	MagnaFlush™ flushing technology
WATER USAGE	1.28 gpf / 4.8 lpf
WATER SURFACE AREA	9" X 10"
ROUGH-IN	12"
MaP RATING	1,000 grams

TRAP DIAMETER	2"
TRAP SEAL	2-1/4"
SHIPPING WEIGHT	Model 384 - 54 lbs. (24.4 kg) Model 387 - 36 lbs. (16.3 kg)
WARRANTY	Vitreous China - Limited Lifetime Tank Trim - Limited Five Year

TANK OPTIONS	TECHNICAL INFORMATION
	Note: these dimensions are nominal and subject to change without notice.

387RH	Variation of model 387, with right hand trip lever.
387LT	Variation of model 387, with tank liner.



* TOILET SEAT NOT INCLUDED, DIMENSIONS HERE REPRESENT AN STANDARD TOILET SEAT.

Fixture performance and specifications meet or exceed ASME A112.19.2/CSA B45.1 standards, and other state and local codes.