

# 137-3125 ALTO<sup>®</sup> 1.28



Elongated Front, SmartHeight™ Vitreous China, Two-Piece Toilet

## FEATURES

- 3-bolt SmartFaster™ tank-to-bowl connection
- 1.28 gpf / 4.8 lpf high efficiency water consumption
- Uses 20% less water than conventional toilets
- Elongated front SmartHeight™ bowl
- 3-2" hybrid flapper flush valve
- Fluidmaster® anti-siphon pilot fill valve
- 14" rough-in
- Model 31 color-match, plastic trip lever
- 2" glazed trapway
- The Mansfield® Limited Lifetime Warranty
- Available in White



**MODEL 137-3125**

Toilet seat not included







ELONGATED



SMARTHEIGHT ADA

## COMPONENTS

| MODEL #                       | DESCRIPTION   | CODES/STANDARDS   |
|-------------------------------|---|---|
| 137-3125                      | Elongated front, SmartHeight™ two-piece toilet  |     |
| 137                           | Elongated front, SmartHeight™ toilet bowl only. Less toilet seat. Specify color.  |   |
| 3125                          | Tank and cover only with left hand, front-mount, color-match, plastic trip lever. Fluidmaster® anti-siphon fill valve. Less supply. |   |
| TANK TRIM & REPLACEMENT PARTS |   |   |
| 31                            | Trip lever - color-match, plastic trip lever, left hand   |   |
| 228                           | 3-2" Hybrid flapper flush valve   |   |
| 400A                          | Fluidmaster® anti-siphon pilot fill valve   |   |
| 2206                          | Anti-siphon pilot fill valve (compatible replacement)   |   |
| 630-0207                      | 3" Replacement flapper kit  |   |
| 125-LID                       | Tank lid (14" Rough-in)   |   |







# 137-3125 ALTO<sup>®</sup> 1.28



Elongated Front, SmartHeight™ Vitreous China, Two-Piece Toilet

## SPECIFICATIONS

| MODEL #  | DESCRIPTION   | CODES/STANDARDS   |
|----------|---|---|
| 137-3125 | Elongated front, SmartHeight™ (1.28 gpf / 4.8 lpf) two-piece toilet |     |

|                      |                                 |
|----------------------|---------------------------------|
| MATERIAL             | Vitreous China                  |
| WATER PRESSURE RANGE | 20 to 80 PSI                    |
| FLUSH SYSTEM         | 3-2" Hybrid flapper flush valve |
| WATER USAGE          | 1.28 gpf / 4.8 lpf              |
| WATER SURFACE AREA   | 9' X 10'                        |
| ROUGH-IN             | 14"                             |
| MAP RATING           | 800 grams                       |

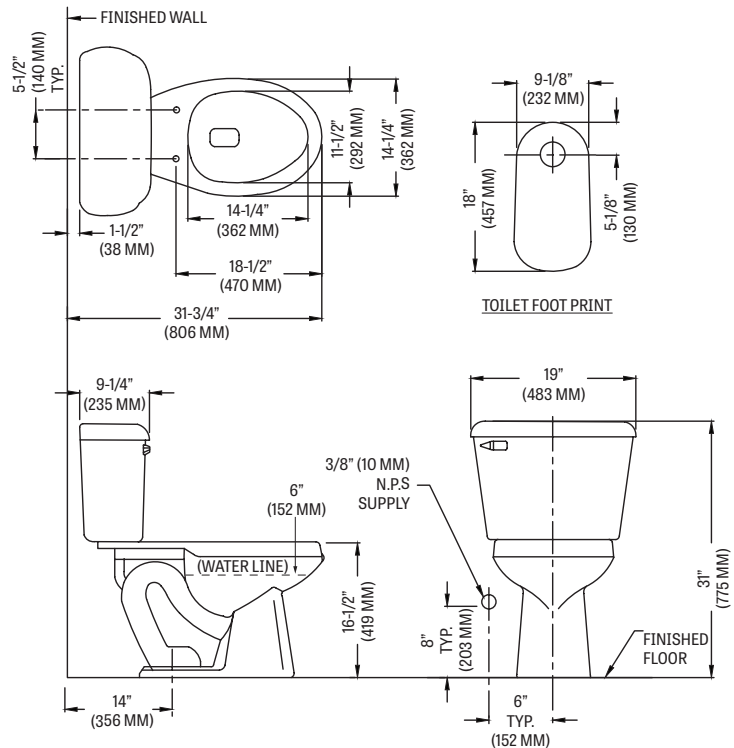
|                 |   |
|-----------------|---|
| TRAP DIAMETER   | 2'  |
| TRAP SEAL       | 2-5/8'  |
| SHIPPING WEIGHT | Model 137 - 56 lbs. (24 kg)<br>Model 3125 - 46 lbs. (21 kg)       |
| WARRANTY        | Vitreous China - Limited Lifetime<br>Tank Trim - Limited One Year |

## TANK OPTIONS

|        |   |
|--------|---|
| 3173   | Standard 1.28 gpf configuration: 3-2" hybrid flapper flush valve, Fluidmaster® anti-siphon pilot fill valve, left hand, color-match trip lever. |
| 3173RH | Variation of model 3173, with right hand, color-match trip lever.   |
| 3165   | Variation of model 3173, with cover lock.   |
| 3174   | Variation of model 3173, with tank liner.   |
| 3120   | Variation of model 3173, with left hand, chrome trip lever.   |
| 3125   | Variation of model 3173, 14" rough-in.  |

## TECHNICAL INFORMATION

Note: these dimensions are nominal and subject to change without notice.



Fixture performance and specifications meet or exceed ASME A112.19.2/CSA B45.1 standards, and other state and local codes.