

# 151-153 QUANTUM ONE™

**MANSFIELD®**

Elongated Front, Pressure-Assist, Rear Outlet, Floor-Mount, ADA\*, SmartHeight Vitreous China, Two-Piece Toilet






## FEATURES

- High performance pressure-assist, high efficiency toilet (HET)
- Flushmate IV™ flushing technology
- 1.0 gpf / 3.8 lpf ultra-low water consumption
- Saves almost 40% more water than conventional 1.6 gpf flushing systems
- Elongated front, floor-mount, rear outlet SmartHeight™ bowl
- Model 45 chrome-plated, metal trip lever
- 1-7/8" glazed trapway
- The Mansfield® limited lifetime warranty on china, Flushmate ten-year limited warranty on vessel
- Available in White

\*Meets ADA height requirement when installed with a regular toilet seat



## COMPONENTS

MODEL #	DESCRIPTION	CODES/STANDARDS
<b>151-153</b> (151010000-153010000)	Elongated front, ADA*, floor-mount, rear outlet, pressure-assist, two-piece toilet.	    
<b>151</b> (151010000)	Elongated front, ADA*, rear outlet, floor-mount, pressure-assist, SmartHeight bowl only. Toilet seat not included.	
<b>153</b> (153010000)	Pressure-assist tank and cover only with left hand chrome-plated, metal trip lever. Supply not included.	
<b>TANK OPTIONS</b>		
<b>153RH</b>	Pressure-assist tank and cover only with right hand chrome-plated, metal trip lever. Supply not included.	
<b>154</b>	Pressure-assist tank and cover only with chrome-plated, plastic push button actuator. Supply not included.	
<b>TANK TRIM &amp; REPLACEMENT PARTS</b>		
<b>45</b>	Trip lever - chrome-plated, metal trip lever left hand	
<b>125-LID</b>	Tank lid	
<b>FLUSHMATE® 504</b>	Pressure-assist flushing system. Separate warranty applies. Contact FLUSHMATE® at 1-800-533-3460.	

# 151-153 QUANTUM ONE™



Elongated Front, Pressure-Assist, Rear Outlet, Floor-Mount, ADA\*, SmartHeight Vitreous China, Two-Piece Toilet

## SPECIFICATIONS

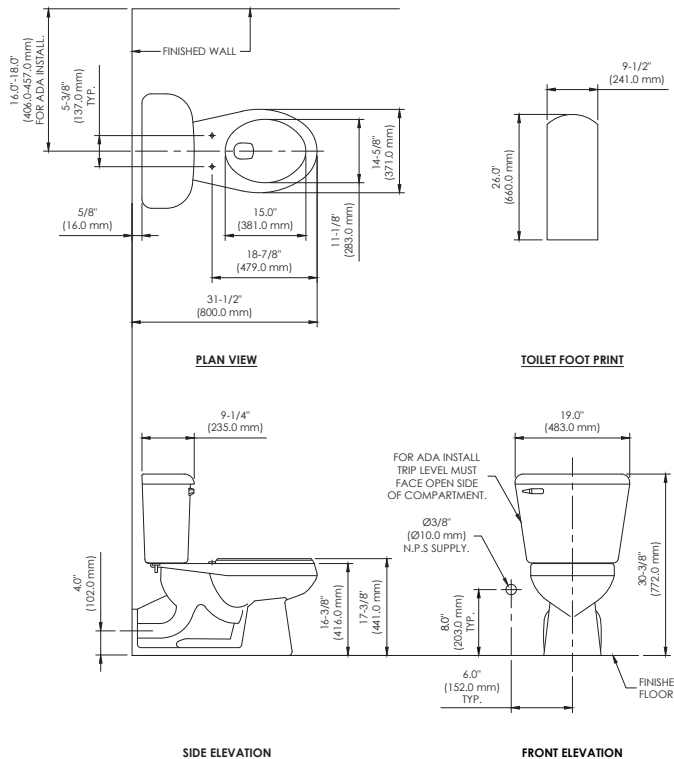
MODEL #	DESCRIPTION	CODES/STANDARDS
151-153	Elongated front, rear outlet, floor-mount SmartHeight (1.0 gpf / 3.8 lpf) two-piece toilet	    

MATERIAL	Vitreous China
WATER PRESSURE RANGE	35 to 80 PSI
FLUSH SYSTEM	Flushmate IV™ flushing technology
WATER USAGE	1.0 gpf / 3.8 lpf
WATER SURFACE AREA	10-1/2" X 12-1/4"
ROUGH-IN	Rear outlet
MaP RATING	600 grams

TRAP DIAMETER	1-7/8"
TRAP SEAL	2-3/4"
SHIPPING WEIGHT	Model 151 - 60 lbs. (27.2 kg) Model 153 - 41 lbs. (18.5 kg)
WARRANTY	Vitreous China - Limited Lifetime Vessel - Limited Ten Year (Flushmate)

## TECHNICAL INFORMATION

**Note:** these dimensions are nominal and subject to change without notice.



\* TOILET SEAT NOT INCLUDED, DIMENSIONS HERE REPRESENT AN STANDARD TOILET SEAT.

Fixture performance and specifications meet or exceed ASME A112.19.2-2013/CSA B45.1-13 standards, and other state and local codes.