

1313 ADA

Floor Mount, Rear Outlet, Elongated Front, SmartHeight™ Flush Valve Toilet

FEATURES

- Specifically designed for commercial and industrial applications
- 1.28* or 1.6 gpf low water consumption
(*when using the proper 1.28 flushometer)
- High performance, high efficiency (HET)
- Elongated front, SmartHeight™, floor mount, rear outlet
- ADA compliant
- 1-7/8" glazed trapway
- The Mansfield® limited lifetime warranty
- Available in White






MODEL 1313

Toilet seat not included



ELONGATED

COMPONENTS




MODEL #	DESCRIPTION	CODES/STANDARDS
1313	Elongated front, SmartHeight™, rear outlet, flush valve toilet bowl. Less toilet seat, flush valve and supply.	   HIGH EFFICIENCY TOILET C ADA COMPLIANT



1313 ADA

Floor Mount, Rear Outlet, Elongated Front, SmartHeight™ Flush Valve Toilet

SPECIFICATIONS

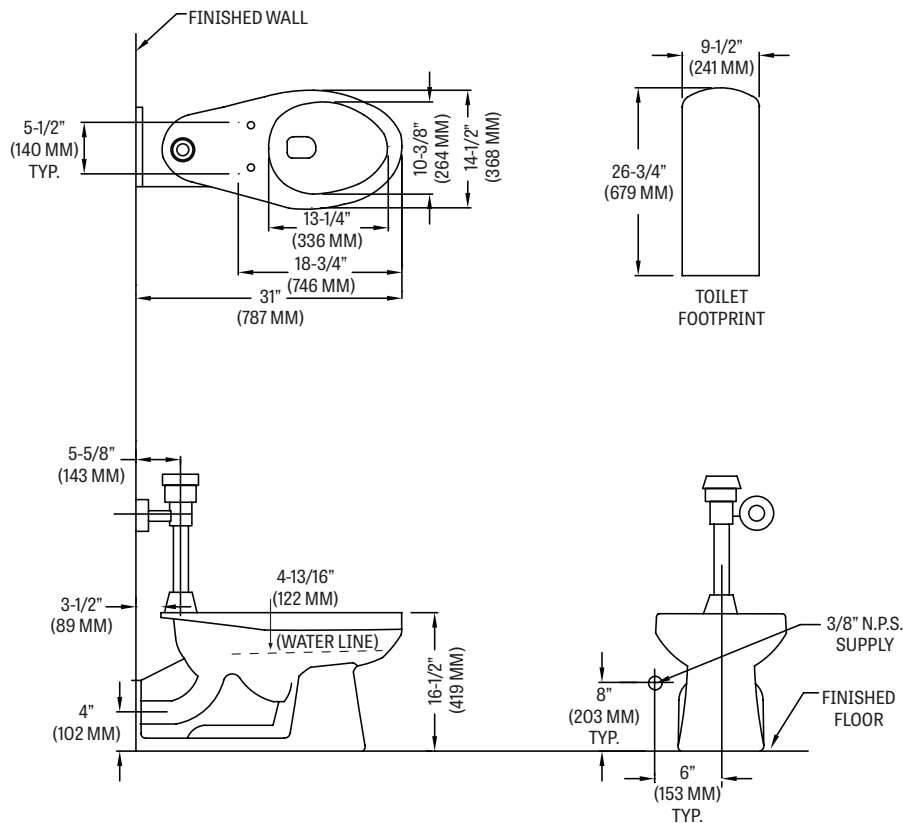
MODEL #	DESCRIPTION	CODES/STANDARDS
1313	Elongated front, SmartHeight™, floor mount, flush valve toilet	  

MATERIAL	Vitreous China
WATER PRESSURE RANGE	20 to 80 PSI
FLUSH SYSTEM	Siphon jet technology
WATER USAGE	1.28 or 1.6 gpf / 4.86 or 6.05 lpf
WATER SURFACE AREA	10' X 12'
ROUGH-IN	Rear outlet
MAP RATING	800 grams

TRAP DIAMETER	1-7/8"
TRAP SEAL	2-3/4"
SHIPPING WEIGHT	Model 1313 - 61 lbs. (28 kg)
WARRANTY	Vitreous China - Limited Lifetime Tank Trim - Limited One Year

TECHNICAL INFORMATION

Note: these dimensions are nominal and subject to change without notice.



Fixture performance and specifications meet or exceed ASME A112.19.2-2013/CSA B45.1-13 standards, and other state and local codes.

