

INSTALLATION INSTRUCTIONS

ELM2 LED

CAUTION: For safety and proper operation, read and follow instructions carefully before installation.



QUANTUM[®] LED Series

Patent # US: D473,672
D483,511
D484,272

IMPORTANT SAFEGUARDS

READ AND FOLLOW ALL SAFETY INSTRUCTIONS

SAVE THESE INSTRUCTIONS AND DELIVER TO OWNER AFTER INSTALLATION

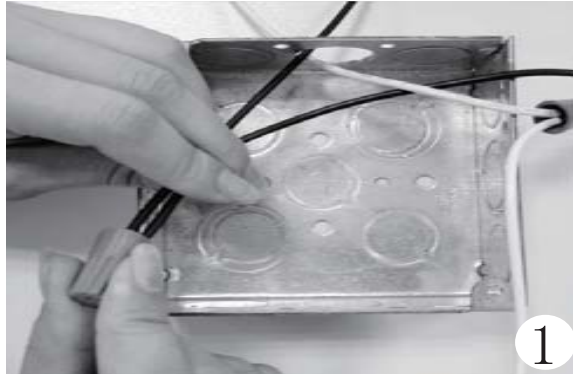
- ⚠ WARNING:** FAILURE TO FOLLOW THESE INSTRUCTIONS AND WARNINGS MAY RESULT IN DEATH, SERIOUS INJURY OR SIGNIFICANT PROPERTY DAMAGE- For your protection, read and follow these warnings and instructions carefully before installing or maintaining this equipment. These instructions do not attempt to cover all installation and maintenance situations. If you do not understand these instructions or additional information is required, contact Lithonia Lighting or your local Lithonia Lighting distributor.
- ⚠ WARNING:** RISK OF ELECTRIC SHOCK- NEVER CONNECT TO, DISCONNECT FROM, OR SERVICE WHILE EQUIPMENT IS ENERGIZED.
- ⚠ WARNING:** RISK OF FIRE- Lamps are hot. Keep combustible material away from hot parts. Observe lamp manufacturer's warnings, recommendations and restrictions on lamp operation and maintenance. Make sure lamps are correctly installed.
- ⚠ WARNING:** DO NOT USE ABRASIVE MATERIALS OR OTHER SOLVENTS. USE OF THESE SUBSTANCES MAY DAMAGE FIXTURE, WHICH MAY RESULT IN PERSONAL INJURY.
- ⚠ WARNING:** RISK OF PERSONAL INJURY- This product may have sharp edges. Wear gloves to prevent cuts or abrasions when removing from carton, handling, installing and maintaining this product (WHERE APPLICABLE).

- Before wiring to power supply, turn off electricity at fuse or circuit breaker.
- Disconnect AC power and unplug battery before servicing.
- Consult your local building code for approved wiring and installation.
- May be used outdoors under cover. (10°C- 40°C).
- Do not let power supply cord touch hot surfaces.
- Do not mount near gas or electric heater.
- Do not install a damaged fixture.
- This product must be installed in accordance with the applicable installation codes and ordinances.
- Proper grounding is required to ensure personal safety (WHERE APPLICABLE).
- All service shall be performed by qualified service personnel. This product must be installed and maintained in accordance with the applicable installation codes by a person familiar with the construction operation of the product and the hazards involved.
- Equipment should be mounted in locations and at heights where it will not readily be subjected to tampering by unauthorized personnel.
- The use of accessory equipment not recommended by the manufacturer may cause an unsafe condition.
- Do not use this equipment for other than intended use.

INSTALLATION INSTRUCTIONS

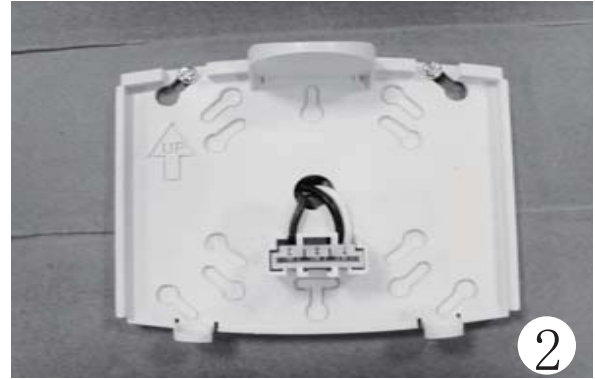
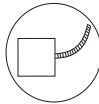
NOTE: This unit should be mounted ONLY through a pair of the preformed keyholes onto a 4" "OCTAGON" junction box, or through a pair of the keyhole knockouts onto a 4" SQUARE junction box.

NOTE: Max mounting height is 11 ft to achieve at least 1 ft-candle of illuminance.



Feed the fixture leads through the mounting plate and make connections to AC power supply.

Use only Flexible Conduit with this unit. Must be used with 4" j-box.



Dress the wires into the junction box. Secure the mounting plate onto the junction box with a minimum of two screws.

NOTE: To ensure proper engagement of the snaps in the mounting plate to the housing, DO NOT OVERTIGHTEN SCREWS.



With AC power turned off, connect battery connector leads.

CAUTION: Continuous AC power must be available at time of installation as damage to the battery will occur if the battery is connected to the charger board for more than 3 days.



Align the holes on the bottom of the housing with the circular snaps at the bottom of the mounting plate and push the housing directly onto the mounting plate. **(NOTE: Make sure red battery wires are securely inside battery compartment prior to mounting housing onto mounting plate.)**

The two at the bottom, as well as the two hidden snaps at the top should make an audible snap when fully engaged. Apply continuous AC power and check that the test switch is illuminated red, indicating proper function.

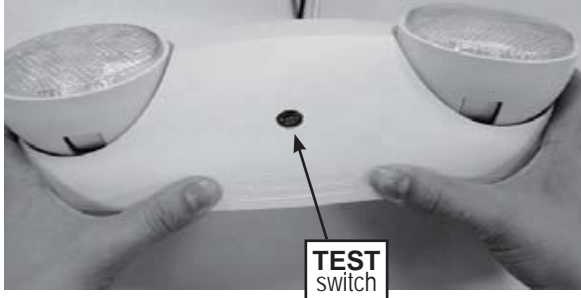
INSTALLATION INSTRUCTIONS

INSTALLATION & MAINTENANCE

A. Normal Operation: When the unit is functioning properly, with power applied, the "TEST" switch will be illuminated red.

B. To Test: Press the "TEST" switch. The fixture will remain illuminated. When switch is released, the lamps will go off.

NOTE: See important battery information before testing.



To Open Housing:

Press both circular snaps at the bottom of the housing. Lift the housing upward and pull it firmly away from the mounting plate.



Lens Removal:

Using small straight blade tool, gently remove the lens from the lamp head as shown above.



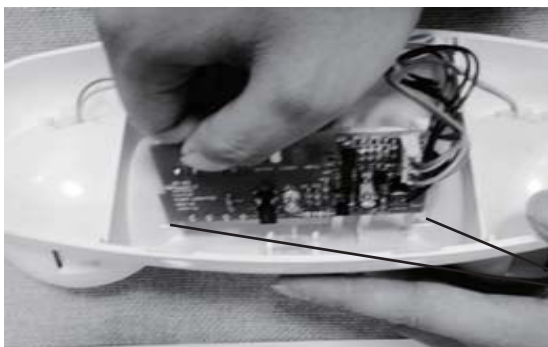
Lamp Replacement:

Disconnect the wire harness for the LED lamp board. Unscrew the screws holding the LED lamp board to the reflector. Re-attach the new LED lamp board onto the reflector and connect the connector.



Battery Replacement:

Disconnect battery connector. Cut cable tie and remove battery. Install new battery in orientation as shown above. Reconnect battery connector.



Charger Board Replacement:

Flex the snap at each end of charger board and pull it straight out of the housing. Disconnect lamphead wires from board and reconnect them to new board. Slide charger board into place, make sure it is secured by the snaps on both ends.

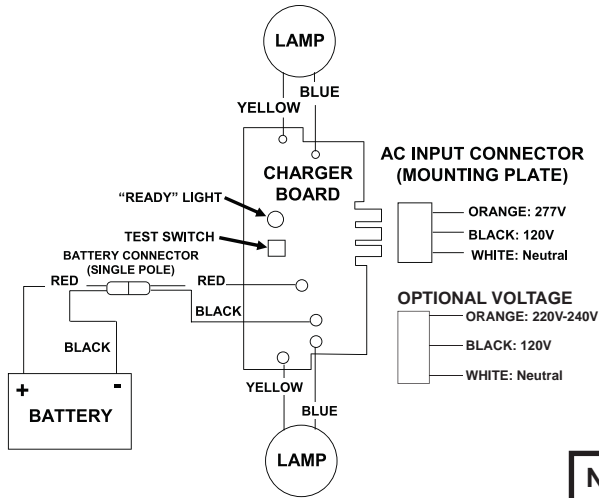
IMPORTANT BATTERY INFORMATION:

Allow battery to charge for 24 hours before testing and first use. Batteries are perishable items. For best results, it is recommended that the battery receive an initial charge within the first 3 years of the manufacture date of the fixture. The manufacture date can be found on the outside of the unit packaging and on the UL label as part of the Date Code/Series.

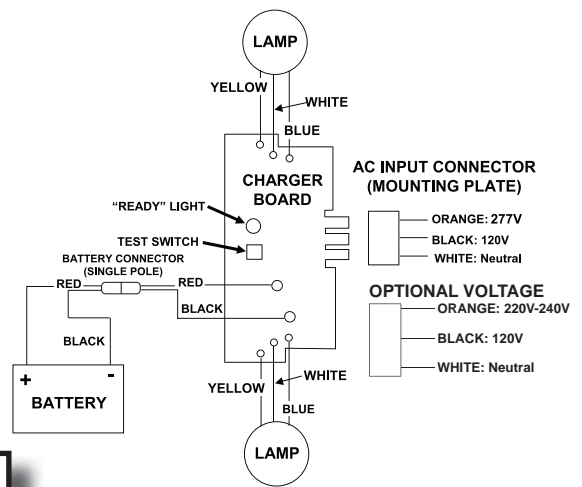
INSTALLATION INSTRUCTIONS

WIRING DIAGRAMS

ELM2 LED

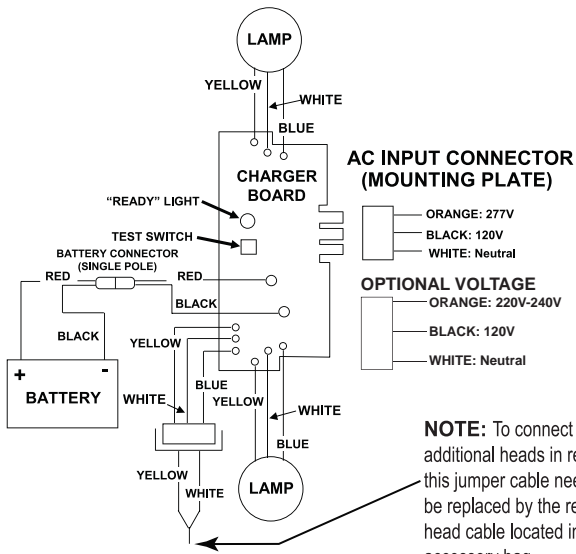


ELM2 LED SD



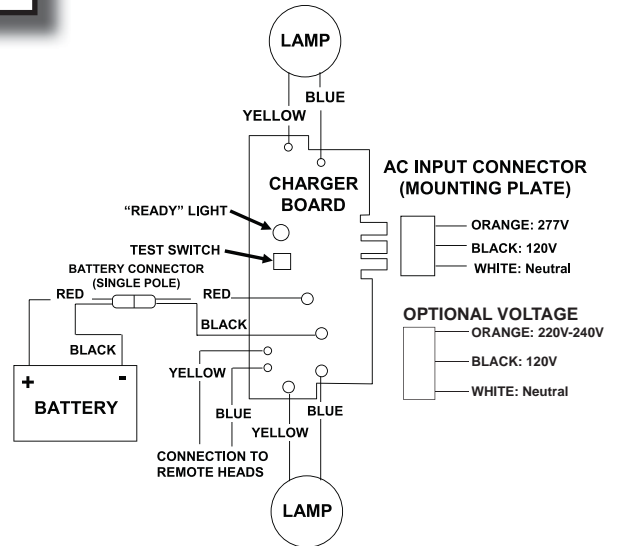
NOTE: Unused input lead must be properly insulated with wire nut or other approved method

ELM2 LED HO SD



NOTE: To connect additional heads in remote, this jumper cable needs to be replaced by the remote head cable located in the accessory bag.

ELM2 LED HO



NOTE for HO models:

Use of 10-12 AWG stranded wire required to connect remote lamp heads to maintain operating voltage when remote fixtures are connected to the emergency lighting equipment.

IMPORTANT CODE COMPLIANCE INFORMATION

In accordance with NFPA 101, documented testing of your emergency lighting system must be tested monthly for a minimum of 30 seconds and annually for 90 minutes. Refer to your local codes for any additional requirements that may apply.



An AcuityBrands Company

Lithonia Emergency

One Lithonia Way, Conyers GA 30012

Phone: 800-334-8694

www.lithonia.com

Part #EMCSA00764 Rev. H

2017.07.28