

401HE ADAM™

MANSFIELD®




Wall-Mount, Wash-Down, Vitreous China Urinal

FEATURES

- Wall-mount, wash-down urinal
- Rim-flushing action
- 0.5 gpf / 1.9 lpf
- 13-5/8" x 19-1/2" x 13-1/4"
- Exposed trap
- The Mansfield® limited lifetime warranty
- Available in White, Biscuit and Bone



COMPONENTS

MODEL #	DESCRIPTION	CODES/STANDARDS
401HE	Vitreous china wash-down (0.5 gpf/1.9 lpf) urinal. Fitted with 3/4" top spud and 1-1/2" outlet spud. Mounting bracket included. Less flushometer. Specify color.	  
PARTS & ACCESSORIES		
471-3261	Urinal hanger	
23	Flushometer bowl & urinal spuds - 1/2" x 1-1/2" cast brass bottom urinal spud or top bowl spud	
24	Urinal top spud - 1" x 3/4" cast brass top urinal spud	
FM-U5	Flushometer valve for 0.5 gpf - DISCONTINUED CALL FOR AVAILABILITY	






401HE ADAM™



Wall-Mount, Wash-Down, Vitreous China Urinal

SPECIFICATIONS

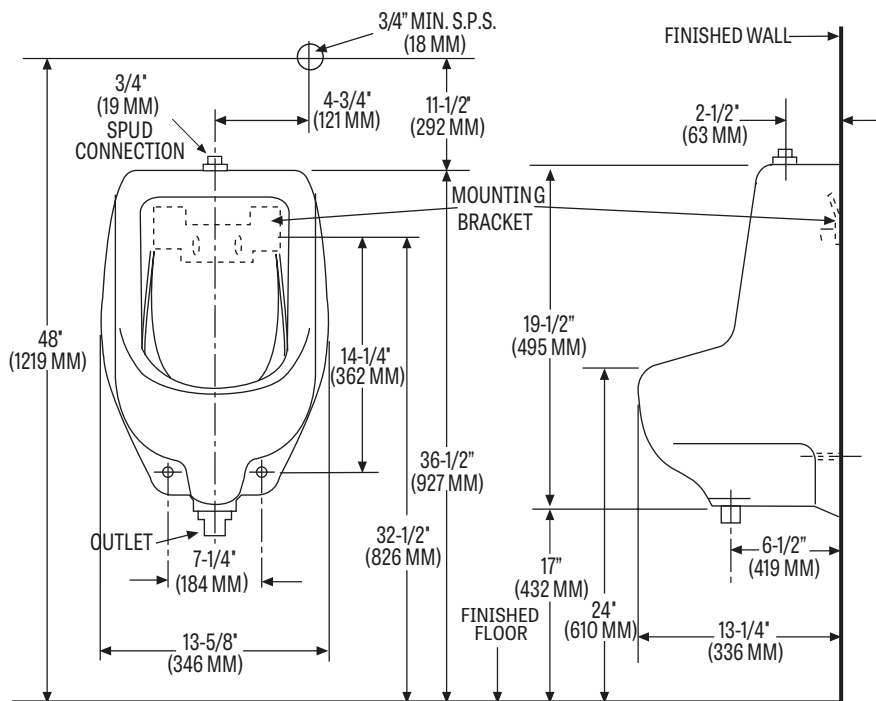
MODEL #	DESCRIPTION	CODES/STANDARDS
401HE	Wall-mount, wash-down urinal	  

MATERIAL	Vitreous China
WATER USAGE	0.5 gpf
INLET	3/4"
OUTLET	1-1/2"
ROUGH-IN	Wall-mount

SHIPPING WEIGHT	Model 401HE - 37 lbs. (16 kg)
WARRANTY	Vitreous China - Limited Lifetime Tank Trim - Limited One Year

TECHNICAL INFORMATION

Note: these dimensions are nominal and subject to change without notice.



All Mansfield® wall-mount urinals are supplied with this exclusive one-piece steel hanger. Easily installed and adjusted, it contains 7 holes for solid mounting against wall. Anchoring screw must be used for correct installation. Standard plumbing practice recommends use of both mounting bracket and anchoring screws. **NOTE:** For secure installation, wall-mounting hanger should be fastened to solid support wall stud.

Fixture performance and specifications meet or exceed ASME A112.19.2-2013/CSA B45.1-13 standards, and other state and local codes.

